

# WILSON, NC

## WILSON CORPORATE PARK

## Prime Industrial Site for Sale

### AVAILABILITY & PRICE

**Available Acreage:** 293  
**Sales Price:** \$35,000 per acre

### GENERAL INFORMATION

**Address:** Merck Road, Wilson, NC 27896  
**County:** Wilson  
**In City Limits:** No  
**Former Use:** New  
**Type of Location:** Business Park  
**Industrial/Business Park:** Wilson Corporate Park  
**Zoning:** I-2

### SITE ACCESS

#### Rail Access

**Potential for Rail:** Yes, adjacent with option to add spur  
**Distance to Rail:** Adjacent

#### Access Roads

**Road:** Merck Road  
**Highway:** 264 / Distance: 0.01 mi  
**Interstate:** 95 / Distance: 0.34 mi

#### Closest Air Transportation or Port

**International:** Raleigh-Durham International / Distance: 51.76 mi  
**General Aviation:** Wilson Industrial Air Center / Distance: 4.21 mi  
**Port:** Port of Norfolk / Distance: 162 mi  
**Port:** Port of Wilmington / Distance: 119 mi

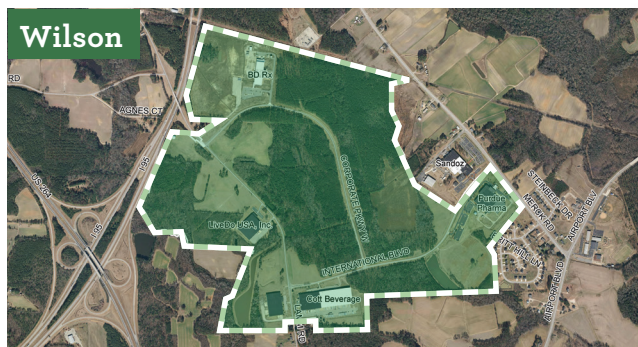
#### Closest Higher Education

**Community College:** Wilson Community College / Distance: 5.33 mi  
**4-Year College or University:** Barton College / Distance: 5.1 mi  
**4-Year College or University:** East Carolina University / Distance: 35.38 mi

### UTILITIES

**Electricity Service Provider:** City of Wilson, 2 substations (looped)  
**Distance to Transmission System (mi):** Less than 0.1  
**Distance to Closest Substation (mi):** Less than 0.1  
**Natural Gas Service Provider:** City of Wilson, 4" high-pressure natural gas line  
**Fiber Provider:** Greenlight (City of Wilson)  
**Water Service Provider:** City of Wilson, 12" and 16" water lines (looped)  
**Waste Water Service Provider:** City of Wilson, 12" and 15" sewer lines (looped)

*All information is believed to be accurate, but is not guaranteed. Prices and available acreage subject to change without notice. Contact an Economic Development representative for complete details.*



### Questions?

**JENNIFER LANTZ**  
252-237-1115 • [jlantz@wilsonedc.com](mailto:jlantz@wilsonedc.com)

**ELECTRICITIES** Economic Development Team  
[sites@electricities.org](mailto:sites@electricities.org)

## WHAT ARE Smart Sites?



**SHOVEL-READY** for development  
**ON-SITE** municipal electric service  
**WATER & SEWER** within 500 feet  
**WITHIN 5 MILES** of Interstate or Interstate-quality highway  
**REVIEWED AND QUALIFIED** by consultants and engineers



*The energy behind public power*