



ELIZABETH CITY, NC

ELIZABETH CITY AVIATION RESEARCH & DEVELOPMENT COMMERCE PARK

Prime Industrial Site for Lease

AVAILABILITY & LEASE PRICE

Available Acreage: 142.53

Lease Only: \$13,939.20 per acre annually

GENERAL INFORMATION

Address: 1028 Consolidated Road,
Elizabeth City, NC 27909

County: Pasquotank

In City Limits: Yes

Type of Location: Business Park

Industrial/Business Park: Elizabeth City Aviation Research
& Development Commerce Park

Zoning: Industrial (I-1)

SITE ACCESS

Access Roads

Roads: Consolidated Road

Highway: US 17 / Future I-87 Intersate / Distance: 8.7 mi

Closest Air Transportation or Port

International: Norfolk Int. Airport / Distance: 57 mi

Closest Port: Port of Virginia / Distance: 62 mi

Channel Depth: 55 ft

Closest Higher Education (Within 50 miles)

Community College: College of the Albemarle,
Tidewater Community College

4-Year College or University: Elizabeth City State
University, Mid-Atlantic Christian University,
Old Dominion University

UTILITIES

Electricity Service Provider: City of Elizabeth City

Distance to Transmission System (mi): At site

Distance to Closest Substation (mi): 1 mile

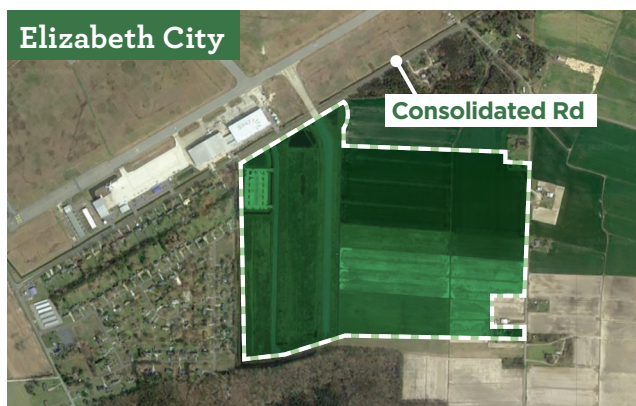
Natural Gas Service Provider: Piedmont Natural Gas

Telecommunications Service Provider: Spectrum

Water Service Provider: Pasquotank County

Waste Water Service Provider: City of Elizabeth City

Elizabeth City



Questions?

SCOTT HINTON

Airport Director, Elizabeth City/Pasquotank County
252-489-8977

CASEY VERBURG

Senior Economic Developer - Industrial
704-794-7844 • cverburg@electricities.org

All information is believed to be accurate, but is not guaranteed. Prices and available acreage subject to change without notice. Contact an Economic Development representative for complete details.

WHAT ARE Smart Sites?



SHOVEL-READY for development

ON-SITE municipal electric service

WATER & SEWER within 500 feet

WITHIN 5 MILES of Interstate or Interstate-quality highway

REVIEWED AND QUALIFIED by consultants and engineers



The energy behind public power