

# ROCKY MOUNT, NC

## TOM BETTS PARKWAY

## Prime Industrial Site for Sale

### AVAILABILITY & PRICE

**Available Acreage:** 55.5 acres

**Sales price:** \$20,000 per acre

### GENERAL INFORMATION

**Address:** Thomas A. Betts Pkwy

**County:** Nash

**In City Limits:** Yes

**Type of Location:** Stand-Alone

**Zoning:** I-1 (Industrial - light duty)

### SITE ACCESS

#### Rail Access

**Distance to Rail:** Carolina Connector Intermodal Rail Terminal (3 mi)

#### Access Roads

**Roads:** Peele Road

**Highway:** Interstate 95 (2.5 mi) and US 301 (3 mi)

#### Closest Air Transportation or Port

**International:** Raleigh-Durham International Airport (70 mi)

**Closest Port:** Port of Norfolk; Port of Wilmington (188 mi)

**Channel Depth:** Norfolk: 50 ft; Wilmington: 42 ft

#### Closest Higher Education (Within 50 miles)

**Community College:** Nash Community College, Edgecombe Community College (2 campuses)

**4-Year College or University:** NC Wesleyan College, East Carolina University

### UTILITIES

**Electricity Service Provider:** City of Rocky Mount

**Distance to Transmission System (mi):** At site

**Distance to Closest Substation (mi):** Approx. 7,000 ft

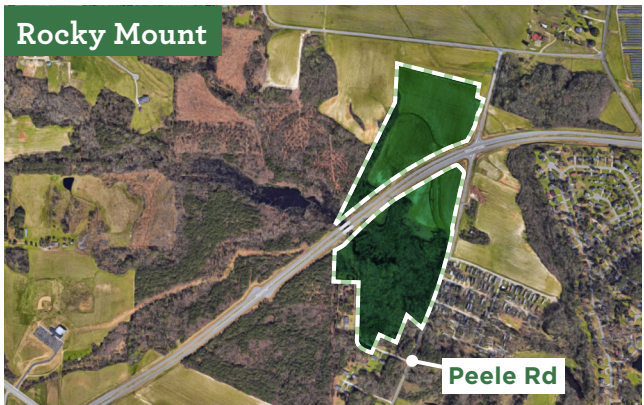
**Natural Gas Service Provider:** City of Rocky Mount

**Telecommunications Service Provider:**

Suddenlink and CenturyLink

**Water Service Provider:** City of Rocky Mount

**Waste Water Service Provider:** City of Rocky Mount



### Questions?

#### OPPIE JORDAN

Vice President, Carolinas Gateway Partnership

**252-442-6224** • [ojordan@econdev.org](mailto:ojordan@econdev.org)

#### CARL REES

Manager, Economic & Community Development

**919-760-6315** • [crees@electricities.org](mailto:crees@electricities.org)

### WHAT ARE Smart Sites?



**SHOVEL-READY** for development

**ON-SITE** municipal electric service

**WATER & SEWER** within 500 feet

**WITHIN 5 MILES** of Interstate or Interstate-quality highway

**REVIEWED AND QUALIFIED** by consultants and engineers

*All information is believed to be accurate, but is not guaranteed. Prices and available acreage subject to change without notice. Contact an Economic Development representative for complete details.*