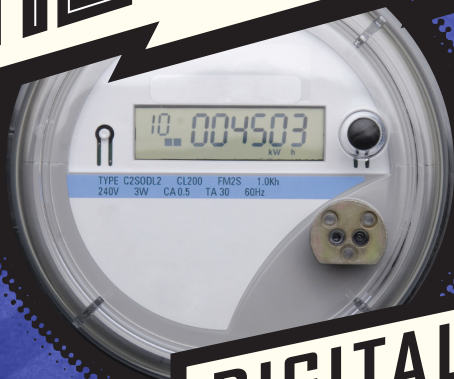


ANALOG



**KNOW
YOUR
METER**



DIGITAL

ANALOG

- ★ Analog meters feature five dials.
- ★ Read odd-numbered dials counterclockwise and even-numbered dials clockwise.
- ★ A utility employee reads analog meters in person once a month.



There are two types of electric meters: analog and digital. They both measure usage in kilowatt-hours, the amount of energy required to provide 1,000 watts of power for one hour. Check your meter daily or weekly to keep track of your usage, especially during extremely hot or cold weather, to prevent unexpected high bills.

DIGITAL

- ★ Digital meters display your usage much like a digital clock displays the time.
- ★ They are highly accurate. Utility personnel read them remotely via a secure radio transmission.
- ★ Digital meters reduce energy theft and are difficult to vandalize.

