

# AYDEN, NC

AYDEN RAIL SITE

## Prime Industrial Site for Sale

### AVAILABILITY & PRICE

**Available Acreage:** 374 acres

**Sales Price:** \$80,000 per acre

### GENERAL INFORMATION

**Address:** 7219 NC-11 S, Ayden, NC 28513

**County:** Pitt

**In City Limits:** Yes

**Industrial/Business Park:** Stand-alone Industrial

**Zoning:** Industrial

### SITE ACCESS

#### Rail Access

**Service provider:** CSX Transportation

**Rail potential:** Yes

**Distance to rail:** On-site

#### Access Roads

**Road:** Thad Little Road

**Highway:** 264, NC-11 Bypass, Interstate 587 / Distance: On-site

#### Closest Air Transportation or Port

**Commercial:** Pitt-Greenville Airport / Distance: 15 mi

**Closest Port:** Morehead City, NC / Distance: 71 mi

#### Closest Higher Education

**Community College:** Pitt Community College / Distance: 5 mi

**4-Year College or University (within 50 mi):**

East Carolina University / Distance: 12 mi

### UTILITIES

**Electricity Service Provider:** Town of Ayden

**Distance to Transmission System (mi):** 0.1 mi

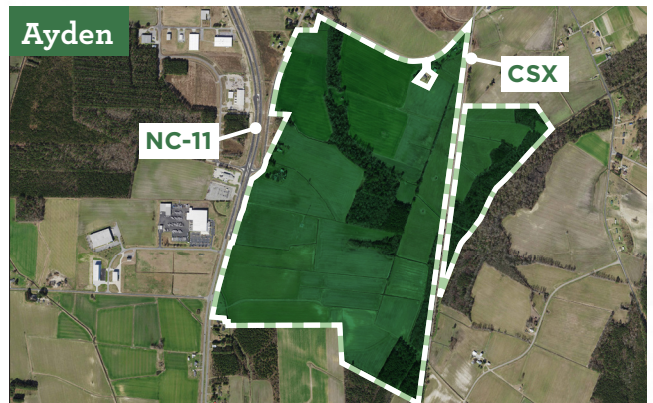
**Distance to Closest Substation (mi):** 0.2 mi

**Natural Gas Service Provider:** Greenville Utilities Commission

**Telecommunications Service Provider:** Optimum and Metronet

**Water Service Provider:** Town of Ayden

**Waste Water Service Provider:** Contentnea Metropolitan Sewerage District



### Questions?

#### MALLORY DENHAM

Economic Development Director, Town of Ayden

252-481-5831 ▪ [mdenham@ayden.com](mailto:mdenham@ayden.com)

#### AUDREY BOONE

Senior Economic Developer

919-760-6313 ▪ [aboone@electricities.org](mailto:aboone@electricities.org)

### WHAT ARE Smart Sites?



**SHOVEL-READY** for development

**ON-SITE** municipal electric service

**WATER & SEWER** within 500 feet

**WITHIN 5 MILES** of Interstate or Interstate-quality highway

**REVIEWED AND QUALIFIED** by consultants and engineers

*All information is believed to be accurate, but is not guaranteed. Prices and available acreage subject to change without notice. Contact an Economic Development representative for complete details.*